

# JONES - PARCEL "D"

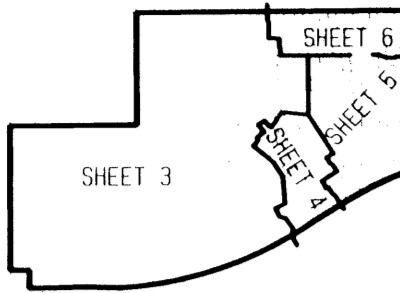
0683-004

189

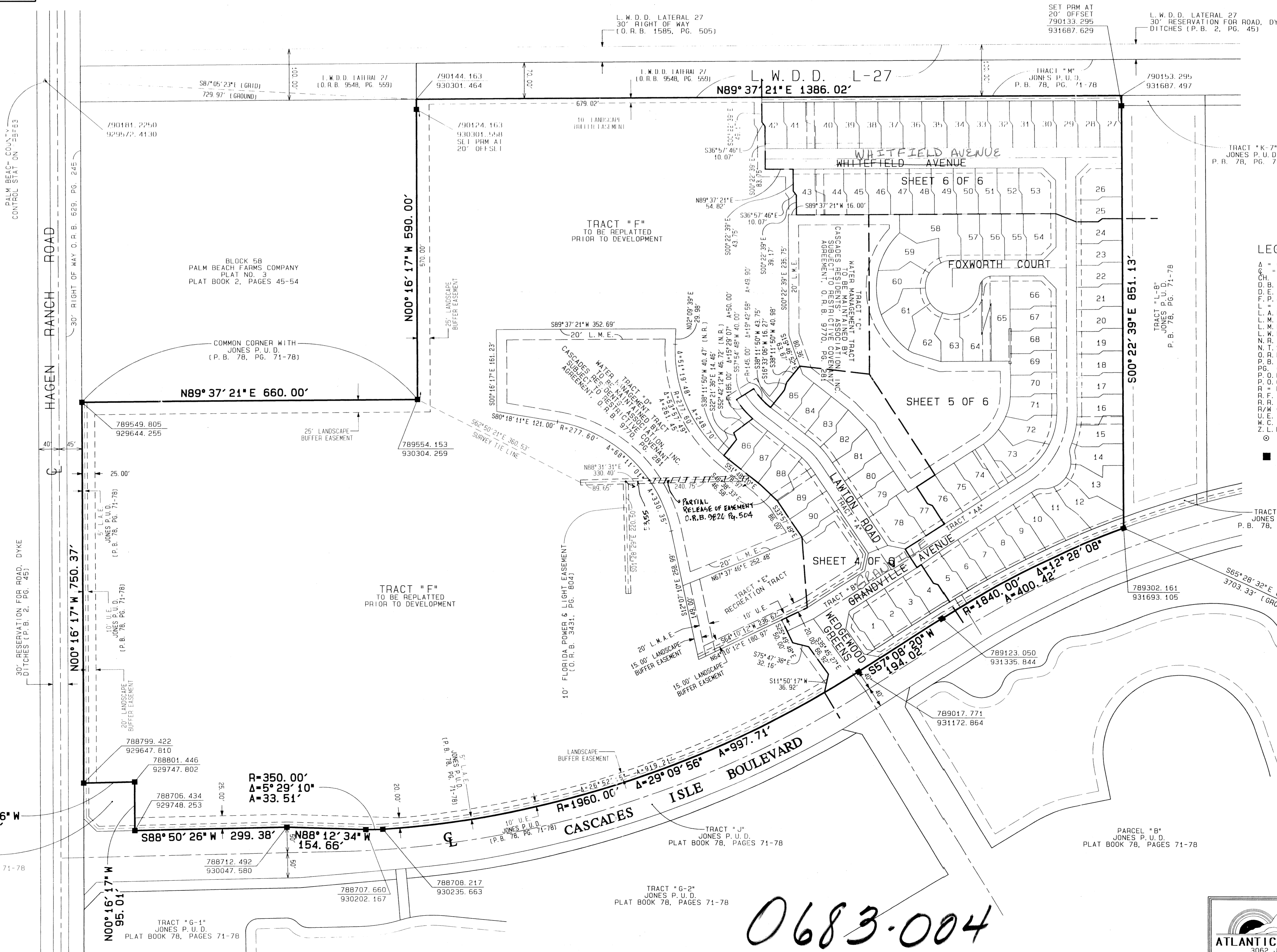
BEING A REPLAT OF PARCEL D, TRACT K-10 & TRACT K-14, JONES P.U.D. AS RECORDED IN PLAT BOOK 78, PAGES 71 THROUGH 78 OF THE PUBLIC RECORDS OF PALM BEACH COUNTY, FLORIDA, SITUATE IN SECTION 33, TOWNSHIP 45 SOUTH, RANGE 42 EAST, PALM BEACH COUNTY, FLORIDA

SHEET 3 OF 6

APRIL 1997



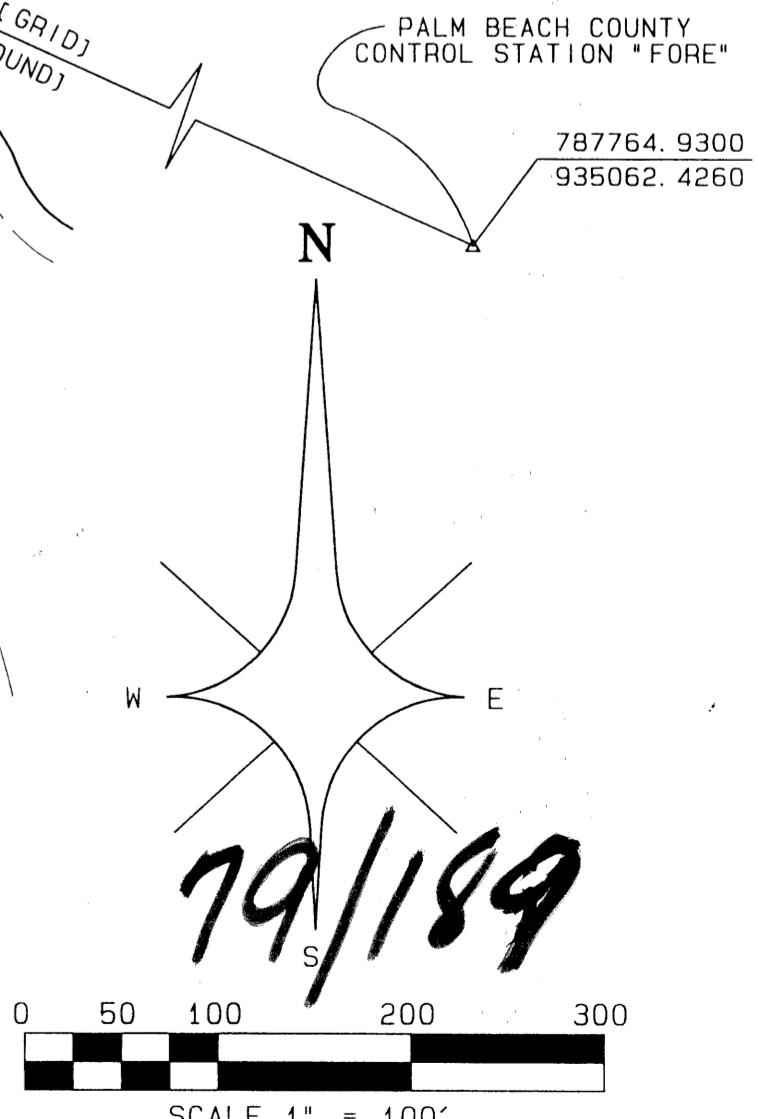
STATE OF FLORIDA } SS  
 COUNTY OF PALM BEACH }  
 THIS PLAT WAS FILED FOR RECORD AT \_\_\_\_\_ DAY OF THIS \_\_\_\_\_ AD., 1997 AND DULY RECORDED IN PLAT BOOK \_\_\_\_\_ ON PAGES \_\_\_\_\_ AND \_\_\_\_\_  
 DOROTHY H. WILKEN, CLERK CIRCUIT COURT  
 BY: \_\_\_\_\_ DC



- LEGEND:
- Δ = CENTRAL ANGLE/Delta
  - C = CENTERLINE
  - CH = CHORD
  - D.B. = DEED BOOK
  - D.E. = DRAINAGE EASEMENT
  - F.P. & L. = FLORIDA POWER AND LIGHT COMPANY
  - L = ARC LENGTH
  - L.A.E. = LIMITED ACCESS EASEMENT
  - L.M.A.E. = LAKE MAINTENANCE ACCESS EASEMENT
  - L.M.E. = LAKE MAINTENANCE EASEMENT
  - L.W.D. = LAKE WORTH DRAINAGE DISTRICT
  - N.R. = NON-RADIAL
  - N.T.S. = NOT TO SCALE
  - O.R.B. = OFFICIAL RECORDS BOOK
  - P.B. = PLAT BOOK
  - P.G. = PAGE
  - P.O.B. = POINT OF BEGINNING
  - P.O.C. = POINT OF COMMENCEMENT
  - R = RADIUS (RADII)
  - R.F. = RADIAL TO FRONT LOT LINE
  - R.R. = RADIAL TO REAR LOT LINE
  - R/W = RIGHT OF WAY
  - U.E. = UTILITY EASEMENT
  - W.C. = WITNESS CORNER
  - Z.L.L.M.E. = ZERO LOT LINE MAINTENANCE EASEMENT
  - ⊙ = PERMANENT CONTROL POINT (PCP)
  - PCP #4380
  - = PERMANENT REFERENCE MONUMENT (PRM) SET PRM #4380

*Pct. 95-19  
 5/3/21K  
 NO SCHOOLS  
 RESTRICTIVE  
 COVENANT*

*\* - NAME Corrections  
 See  
 AFFIDAVIT'S*



SUBDIVISION # 79  
 BOOK 79  
 FLOOD ZONE 200A  
 FLOOD MAP # A4  
 QUAD # 50  
 ZONING RTS  
 CE 95-21  
 ZIP CODE 33437  
 PUD NAME JONES PARCEL D

0683-004

ATLANTIC - CARIBBEAN MAPPING, INC.  
 3062 JCG ROAD - GREENACRES, FLORIDA 33467  
 (561) 964-7884; FAX (561) 964-1969

*Records*